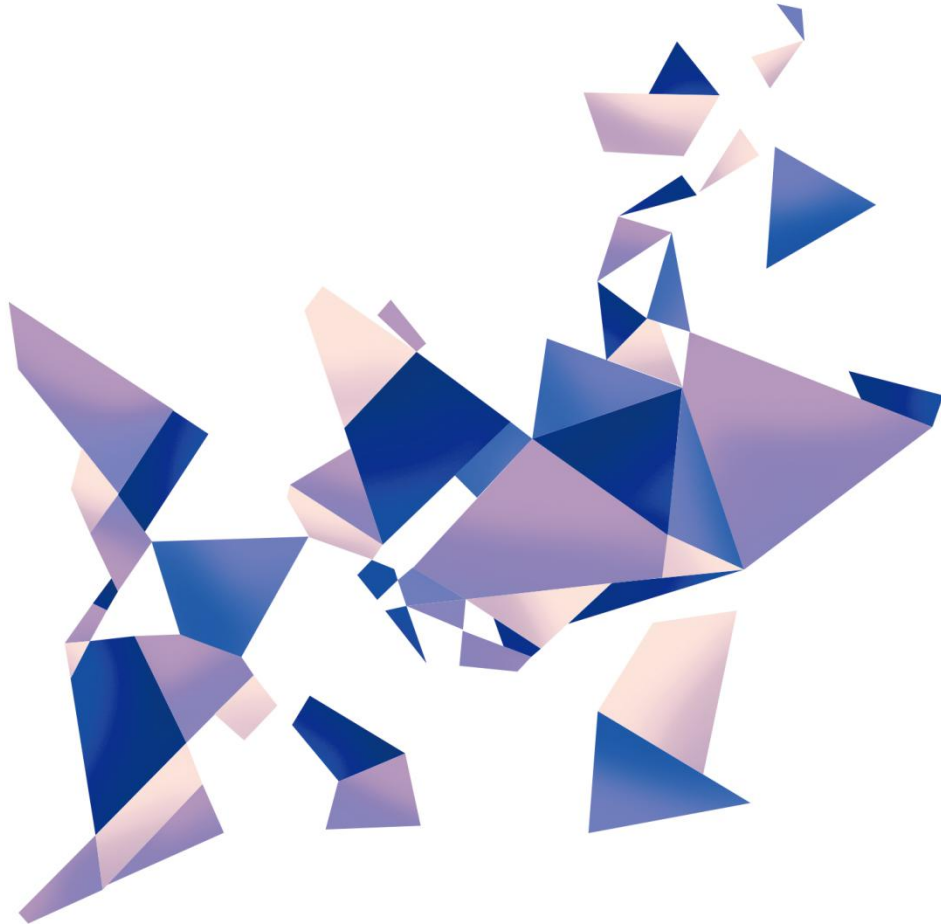


KP2Pro

Pandora series

Version: v1.0

Release Date: October 2021



Specifications



TEL 400 159 0808
Web: www.kystar.com.cn

Beijing KYSTAR Technology Co., Ltd.

Professional Ultra HD Video Display
Control system integrated solution and service provider

Version record

| version number | Change details | release time |
|----------------|------------------------|--------------|
| V1.0 | First edition released | 2021.10.25 |
| | | |
| | | |
| | | |

Pandora Box KP2Pro Product Specifications

Overview

KYSTAR Pandora KP2Pro is a multimedia player that integrates a sending card and a playback terminal. Compared with the traditional synchronous playback solution, it can reduce the need for a computer playback terminal and is easy to control at any time. It is small in size, powerful in performance, powerful in functions, and more. Large load capacity;

Advertisements on mirror screens, light pole screens, full-color door screens, etc.

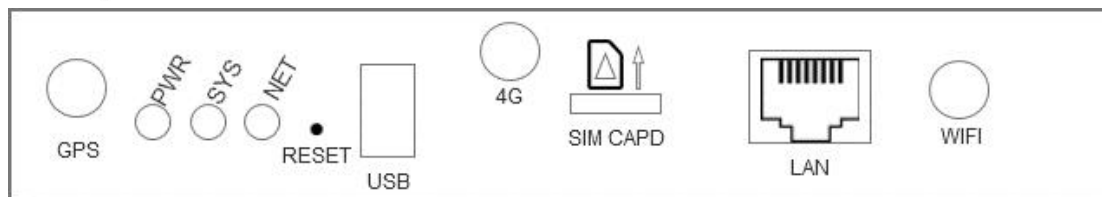


Features

- Gigabit Ethernet port*2, single network port 650000 pixels, the whole machine carries 1.3 million pixels, the widest is 3840, the highest is 2000;
- WIFI, Ethernet port, U disk multiple communication methods
- Built-in 8GB (5G available for users), support U disk expansion
- 3.5mm audio output, audio and video synchronous output
- Support multiple windows and multiple materials to play on the screen at the same time
- Supports wireless configuration of the screen through mobile phones and computers without USB cable
- Support optional relay control, can remotely control external power switch
- Onboard brightness sensor interface, automatically adjust screen brightness according to ambient brightness
- Kystar PE program editing, drag and drop operation, do what you want
- Concise APP for full control of screen adjustment, editing and management,

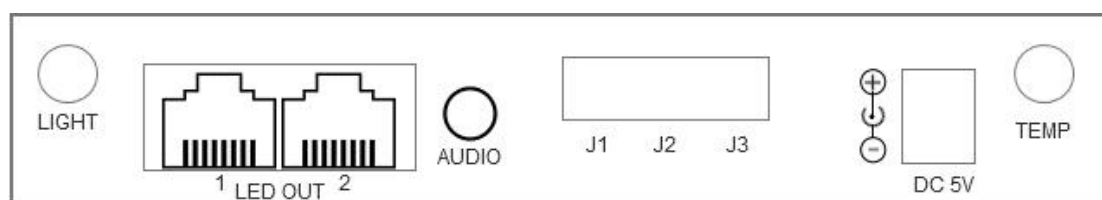
Panel description

front panel



| Name | Function Description |
|-------|--|
| SYS | Running status indicator The system and app start normally, sys is always on; When the player app is abnormal, sys flashes, once per second System upgrade process, sys flashes quickly, 4 times per second |
| NET | connection status indicator The NET light is always on when Pandora is connected, otherwise it will not be on; When connecting to the cloud platform, NET flashes once per second; Upload program, NET flashes fast, 4 times per second |
| PWR | Power indicator, long light indicates normal power supply |
| RESET | Restore factory settings, always press for 5 seconds to factory |
| USB | USB2.0, Update program via U disk |
| 4G | 4G antenna interface |
| SIM | 4G card slot, supports 4G cards of three major operators |
| LAN | 100M input network port, connected to LAN, can be directly connected to PC |
| WIFI | Wifi antenna interface |
| GPS | GPS antenna interface for use in scenarios that require positioning and precise timing |

Back panel



| name | Function Description |
|----------|---|
| LIGHT | Brightness sensor interface |
| TEMP | Temperature and humidity sensor interface |
| LAN1-2 | Two gigabit output network ports, connected to the full range of kystar's receiving cards |
| AUDIO | 3.5mm audio output |
| J1-J2-J3 | Relay interface to control external power switch |
| 5V DC | Provide 5V/2A power supply |

Specification

| External interface type | |
|-------------------------------|---|
| Gigabit output network port*2 | Output signal to receiving card |
| Audio output port*1 | 1/8" (3.5mm)TRS Plug output |
| USB2.0*1 | Storage expansion possible (U disk or SD card, maximum 128G) |
| 100M input network port*1 | Access to LAN, cluster control |
| WIFI antenna*1 | WiFi STA+AP Dual mode, can be connected to the router, can be used as a hotspot for mobile phone, computer connection |
| DC Power input | DC Power input |

| Performance parameter | |
|--------------------------|--|
| Hardware performance | 1.6GH, quad-core CPU, 3D GPU 1GB@600MHz DDR3 high-speed memory Support 1080p@60fps hard decoding playback Support 1080p@30fps hardware encoding |
| Storage | Built-in 8GB storage (5G available to users) |
| Load | One lan port load 650,000 pixel,whole machine load 1.3million pixels, the widest is 3840, the highest is 2000 |
| Wifi Connection distance | 20m (Unobstructed) |

| Support multimedia format | |
|---------------------------|---|
| Video format | AVI, WMV, MPG, RM/RMVB, VOB, MP4, FLV and other common video formats; Supports same time playback of multiple videos |
| Audio format | MPEG-1 Layer III, AAC etc. |
| Image Format | Support bmp、jpg、png etc. |
| Text form | Single line text, static text, multi-line scrolling text, office, etc. |
| Clock | Real-time clock, multi-regional clock display and management |
| OSD | Support 32bit true color OSD, can be displayed in any position, support video/graphics mixing, can superimpose graphics on the video. |

| Whole machine specification | |
|--|---------------------------|
| Dimensions | 162×104×28mm (L×W×H) |
| Support receiving card | Kystar all receiving card |
| Number of loaded receiving cards (single network port) | 200 (Single network port) |
| Input adapter power | DC 5V/2A power supply |
| Working current | 2A |

| | |
|-----------------------|-------------|
| Working Voltage | 3.8V – 5.5V |
| Weight | 378g |
| Operating temperature | -20°C -70°C |
| Working humidity(%) | 5%-95% |

Attachment: equipment size chart

